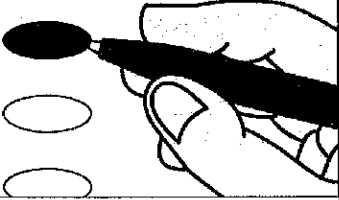


SAMPLE

Official Primary Ballot Nonpartisan Office February 20, 2018

Notice to voters: If you are voting on Election Day, your ballot must be initialed by two election inspectors. If you are voting absentee, your ballot must be initialed by the municipal clerk or deputy clerk. Your ballot may not be counted without initials. (See right column of ballot for initials.)

Instructions



If you make a mistake on your ballot or have a question, ask an election inspector for help. (Absentee voters: Contact your municipal clerk.)

To vote for a name on the ballot, fill in the oval next to the name like this: ●

To vote for a name that is not on the ballot, write the name on the line marked "write-in" and fill in the oval next to the name like this: ●

Judicial

Justice of the Supreme Court Vote for 1

- Rebecca Dallet
- Michael Screnock
- Tim Burns
- write-in:

School District

School District of Milton School Board Member Vote for not more than 3

- Brent R. Miller
- Shelly Crull-Hanke
- Gabriel Szerlong
- Tony Astin
- Brian Kvapil
- Diamond McKenna
- Harvey Smith
- Joe Martin
- write-in:
- write-in:
- write-in:

Milton School District

Official Primary Ballot Nonpartisan Office

February 20, 2018

for

- T. Fulton W4&6 Milton SD
- T. Harmony W1-6 Milton SD
- T. Janesville W3-4 Milton SD
- T. Johnstown Milton SD
- T. Lima W1 Milton SD
- T. Milton W1,2&4 Milton SD
- C. Janesville W19
- C. Milton

Ballot issued by

Initials of election inspectors

Absentee ballot issued by

Initials of municipal clerk or deputy clerk
(If issued by SVDs, both SVDs must initial.)

Certification of Voter Assistance

I certify that I marked or read aloud this ballot at the request and direction of a voter who is authorized under Wis. Stat. sec. 6.82 to receive assistance.

Signature of assistor

For Official Use Only

Inspectors: Identify ballots required to be remade.

Reason for remaking ballot:

- Overvoted
- Damaged
- Other

Original Ballot No. or Duplicate Ballot No.

Initials of inspectors who remade ballot